

QXEP-DKUF-24DR-1502-MR52-M

24 Door Enclosure with QXEP-1502 Intelligent Controller & QXEP-MR52-S3 SIO Modules, 750W Dual Voltage, 120 VAC 24 Managed / 40 Auxiliary Outputs

OVERVIEW

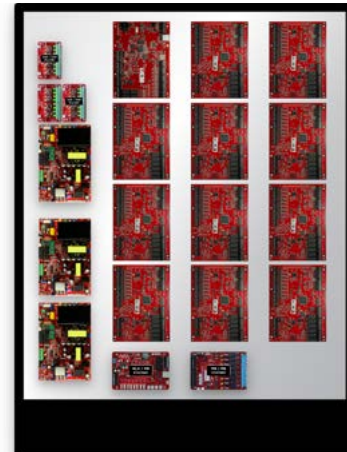
Qumulex Enterprise Panel Door Kits simplify your access control installation by combining the capability of our HID Mercury powered Intelligent Controllers and SIO Modules, with LifeSafety Power Enclosures. These enclosures combine FlexPower power modules alongside our access control hardware in one compact and secure UL listed solution. Features include:

Features include:

- **Built in Fire Alarm disconnect** unlocks doors on a fire alarm
- **Low battery cutoff** protects batteries from deep discharge
- **Dedicated fast charger** prolongs battery life
- **Enhanced surge immunity** for input/output protection
- **Locksafe™** optimized voltages provide longterm lock protection
- **OutSmart™** Visual LED notification (12V/Green, 24V/Blue)
- **Network ready** with optional Netlink™ module
 - Monitor power supply and battery in NetLink dashboard
 - Remote test batteries
- **Lifetime Warranty** LifeSafety Power's quality commitment

System Details:

- **FPO250/250/250 Dual Voltage Power** 750W Total Output, 120 VAC Input, AC Fault and System Fault form C contacts may be triggered by low/no battery, short to earth ground, power supply failure, or blown fuse
- **5 D8P 40 Auxiliary Outputs** 2.5A Class 2 Power Limited Outputs, dual buss voltage selection by zone, OutSmart dual color LEDs
- **3 M8 24 Managed Outputs** 3A fused outputs, programmable for failsafe/failsecure, remote power cycle, monitor voltage and current on each output, programmable limits, dual buss voltage selection by zone, cycle count by zone, OutSmart dual color LEDs
- **1 NLX NetLink Module** Provides remote monitoring of power supply and battery set, remote battery testing, temperature monitoring, tamper switch monitoring, email/SNMP alerts on faults, RS485 port for Distributed Power Monitoring (DPM), compatible with MSM Enterprise
- **E12M Enclosure** Size: 48.0H x 36.0W x 8.5D in (121.92 x 91.44 x 21.59 cm)
- **Enclosure** Backplate mounting for LP1502, LP4502, LP2500, MR52, MR16IN/OUT
- **System Weight** 114.10 lbs (51.75kg)



ELECTRICAL RATINGS

Parameter	Rating
Input Voltage	120 VAC, 50/60Hz
Input Power (max)	846W
Output Power	750W
Auxiliary Outputs	40 @ 2.5A Class 2 Power Limited
Managed Outputs	24 @ 3A fused
Maximum Charge Current	FPO250: 2A, 80AH maximum
Low Power Disconnect	at 70% of battery voltage
Systems BTU/Hr	109 BTU/Hr
Operating Temperature	32 to 122F (0 to +50C)
Efficiency	87% 120VAC 60Hz In, Full Load
Agency Approvals	UL294, UL1076, ULC S318, ULC S319, CSA C22.2 #107.1, FCC Part 15, Subpart B, CSFM IEC 62368-1:2014, EN 55032:2015, EN6100-3-2:2014, EN6100-3-3:2013, EN55024:2010+A1:2015, BIS IS13252(Part 1):2010, NOM-001-SCFI-1933, REACH 209, ROHS 3, RCM AS/NZS 4417.1, SAA AS/NZS 62368.1:2018

Order Info

QXEP-DKUF-24DR-1502-MR52-M	120 VAC, 750W, 24 Managed, 40 Aux
----------------------------	-----------------------------------

Agency Listing

US | Canada | Mexico | Europe | UK | India | Australia | New Zealand | ROHS

