

QXEP-EKUF-16FL-1502-MR16IN-MR16OUT-M

16 Floor Enclosure with QXEP-MP/LP1502 Intelligent Controller & MR Series 3 SIO Modules, 150W Dual Voltage, 120 VAC 8 Managed / 8 Auxiliary Outputs

OVERVIEW

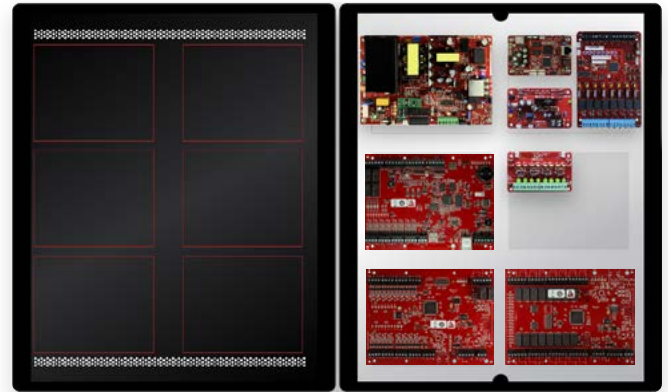
Qumulex Enterprise Panel Elevator Kits simplify your access control installation by combining the capability of our HID Mercury powered Intelligent Controllers and SIO Modules, with LifeSafety Power Enclosures. These enclosures combine FlexPower power modules alongside our access control hardware in one compact and secure UL listed solution.

Features include:

- **Built in Fire Alarm disconnect** unlocks doors on a fire alarm
- **Low battery cutoff** protects batteries from deep discharge
- **Dedicated fast charger** prolongs battery life
- **Enhanced surge immunity** for input/output protection
- **Locksafe™** optimized voltages provide longterm lock protection
- **OutSmart™ Visual LED notification (12V/Green, 24V/Blue)**
- **Network ready** with optional Netlink™ module
 - Monitor power supply and battery in NetLink dashboard
 - Remote test batteries
- **Lifetime Warranty** LifeSafety Power's quality commitment

System Details:

- **150W Total Output**, 120 VAC Input, AC Fault and System Fault form C contacts may be triggered by low/no battery, short to earth ground, power supply failure, or blown fuse
- **D8P 8 Auxiliary Outputs** 2.5A Class 2 Power Limited Outputs, dual buss voltage selection by zone, OutSmart dual color LEDs
- **M8 8 Managed Outputs** 3A fused outputs, programmable for failsafe/failsecure, remote power cycle, monitor voltage and current on each output, programmable limits, dual buss voltage selection by zone, cycle count by zone, OutSmart dual color LEDs
- **NL4 NetLink Module** Provides remote monitoring of power supply and battery set, remote battery testing, temperature monitoring, tamper switch monitoring, email/SNMP alerts on faults, compatible with MSM Enterprise
- **E4M1 Enclosure Size:** 24.0H x 20.0W x 6.5D in (60.96 x 50.8 x 16.51 cm)
- **Enclosure Backplate** and door mounting for MP/LP1502, 4502, 2500, MR52, MR16IN/OUT
- **System Weight** 32.00 lbs (14.51kg)
- **Important Note:** QXEP Door Kits do NOT include AC Wall adapter or cord.



ELECTRICAL RATINGS

Parameter	Rating
Input Voltage	120 VAC, 50/60Hz
Input Power (max)	170W
Output Power	150W
Auxiliary Outputs	8 @ 2.5A Class 2 Power Limited
Managed Outputs	8 @ 3A fused
Maximum Charge Current	FPO150: 2A, 80AH maximum
Low Power Disconnect	at 70% of battery voltage
Systems BTU/Hr	66 BTU/Hr
Operating Temperature	32 to 122F (0 to +50C)
Efficiency	88% 120VAC 60Hz In, Full Load
Agency Approvals	UL294, UL1076, ULC S318, ULC S319, CSA C22.2 #107.1, FCC Part 15, Subpart B, CSFM IEC 62368-1:2014, EN 55032:2015, EN6100-3-2:2014, EN6100-3-3:2013, EN55024:2010+A1:2015, BIS IS13252(Part 1):2010, NOM-001-SCFI-1933, REACH 209, ROHS 3, RCM AS/NZS 4417.1, SAA AS/NZS 62368.1:2018

Order Info

QXEP-EKUF-16FL-1502-MR16IN-MR16OUT-M	120 VAC, 150W, 8 Managed, 8 Aux
--------------------------------------	---------------------------------

Agency Listing

US | Canada | Mexico | Europe | UK | India | Australia | New Zealand | ROHS

